

# Exhibitions

Spring/Summer 2026



Matisse's *Femme au chapeau*:  
A Modern Scandal  
May 16–Sep 13, 2026

**Current  
+ Upcoming**

# On View

Match the letters next to the exhibition names with the gallery locations on the museum map.

## Floor 1

---



Kara Walker, *Fortuna and the Immortality Garden (Machine)*, 2024; photo: Fredrik Nilsen Studio

**(B)** Kara Walker: Fortuna and the Immortality Garden (Machine)

Through June 1 | FREE TO SEE

**(A)** Samia Halaby: Kinetic Paintings

Through May 19 | FREE TO SEE

**(A)** Julie Mehretu: HOWL, eon (I, II)

Through Aug 23 | FREE TO SEE

## Floor 2

---



Dewey Crumpler, *Tulip Memories III*, 1995

**(D)** People Make This Place: SFAI Stories Through July 5

Works across media by San Francisco Art Institute alumni and former faculty showcase the school's legacy of experimentation.

**(F)** Bay Area Walls: Gene Luen Yang

Through July 5 | FREE TO SEE

## Floor 3

---



Larry Fink, *Studio 54, New York City*, 1977

**(G)** Feel the Beat: Dance in Photographs May 16, 2026–

Jan 31, 2027

**(K)** Bay Area Walls: Jenifer K Wofford

Through Sep 27



Claes Oldenburg and Coosje van Bruggen, *Geometric Apple Core*, 1991

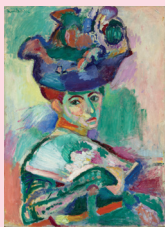
**(J)** Claes Oldenburg + Coosje van Bruggen: Thinking Big Ongoing

Part of *Reimagined: The Fisher Collection at 10*

**(I)** Table Manners Through Aug 2

## Floor 4

---



Henri Matisse, *Femme au chapeau* (Woman with a Hat), 1905

**(M)** **Matisse's *Femme au chapeau*: A Modern Scandal** Opens May 16

Be transported to 1905 Paris where Henri Matisse's *Femme au chapeau* first shocked the public, then explore the painting's profound impact on artists into the present.

🎫 Special exhibition ticket required

**(L)** **KAWS: FAMILY** Through May 3

🎫 Special exhibition ticket required



Andy Warhol, *Self-Portrait*, 1986

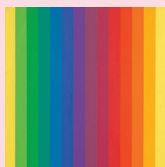
**(P)** **Ways of Seeing: Fourteen Artists** Ongoing

Part of *Reimagined: The Fisher Collection at 10*

**(O)** **New Work: Sheila Hicks**  
Through Aug 9

## Floor 5

---



Ellsworth Kelly, *Spectrum I*, 1953

**(Q)** **Calder, Kelly, LeWitt: Fundamentals of Form** Ongoing

Step into a world of color, line, and shape with discoveries for art lovers of all ages and explore the innovations of three enduringly influential artists.

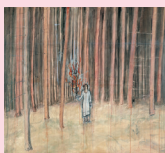
Part of *Reimagined: The Fisher Collection at 10*

**(S)** **Olafur Eliasson: One-way colour tunnel** Ongoing

**(T)** **Bay Area Walls: David Huffman**  
Through June 7

## Floor 6

---



Anselm Kiefer, *Mann im Wald* (Man in the Forest), 1971

**(U)** **Memory and Matter: Personal and Collective Histories** Ongoing

Artists consider memory from a range of perspectives in this moving presentation featuring the work of Anselm Kiefer and William Kentridge, among others.

Part of *Reimagined: The Fisher Collection at 10*

## Floor 7

---

**Closed for installation**

# Upcoming



Graciela Iturbide, *La Nuestra Señora de las Iguanas, Juchitán, Oaxaca, México* (Our Lady of the Iguanas, Juchitán, Oaxaca, Mexico), 1979

## Graciela Iturbide: Between Two Worlds

Opening July 11

This expansive survey of the Mexico City-based artist's black-and-white photographs immerses viewers in Iturbide's visual world of uncanny scenes and dreamlike traditions.



Jacob Hashimoto, *The Fractured Giant*, 2022

## Jacob Hashimoto: Giant Arc

Opening Aug 22

In his largest installation yet, Hashimoto mixes over 75,000 elements suspended together into a mesmerizing cloud canopy that envelops the soaring Roberts Family Gallery.

**Keep an eye out for more upcoming installations!**

## Bay Area Walls: Craig Calderwood

Opening July 11

## Bay Area Walls: Isaac Vazquez Avila

Opening Aug 8



Scan for a complete, up-to-date list of exhibitions.

**SF MO MA**